



# TAMSEN MARITIM

*Welcome to TAMSEN MARITIM*



## Our crew today



Dear customers, crews and friends,  
let us introduce to you the TAMSEN MARITIM shipyard in Rostock, Germany. Since 1994 we have had more than twelve hundred dockings as one of the most well-known refit yards in Germany. Today our company is more successful than ever, with its diversification into the three main fields of ship repair, shipbuilding and the building of large composite structures. The right investments in state-of-the-art facilities and in highly skilled employees as well as the constant pursuit of strategic aims have led to this success. 1.200 repairs and modernisations of all types of ships and boats, the application of the latest composite technologies for various industries as well as the further development of newbuilds from 40' boats to 200' ships and special vessels comprise the current portfolio. For the surging need of supplying patrol boats for our authorities, we consistently apply lightweight and proven technologies to products which will be demanded by our unique and challenging customers. Success comes from the experience over the last 30 years in which many vessels of all kinds have been serviced by us. From this we draw the energy to fulfil your expectation professionally - in terms of quality - on time and budget.

Bound by tradition  
Christian Schmoll

A very warm welcome to TAMSEN MARITIM

maritime tradition  
since 1850

preservation of value

made in Germany



➤ Repair Naval Vessels



➤ Repair Authority Vessels



➤ Repair Commercial Ships



➤ Modernizations & Conversions



➤ Newbuild



➤ Composite Systems

## FACTS & FIGURES:

YARD AREA:	54.000 sqm
COVERED FACILITY:	25.000 sqm
10 WORKSHOPS:	28 m – 81 m length
4 X ACCOMMODATION BERTH:	up to 90 m length
5-AXIS CNC MILLING MACHINE:	70 m x 13 m x 7 m
SHIP LIFT SYSTEM:	65 m x 20 m, 1,500 t
PIER LENGTH:	300 m
WATER DEPTH:	7 – 10 m

## LOCATION BENEFITS

- central location on the Baltic Sea coast
- 20 min from Rostock Airport
- close to Hamburg and Berlin
- only 5 nm from the open sea
- tide free water
- local university and institutes

## OUR HISTORY | ROSTOCK / GERMANY

**1850** → Founding of the Neptun shipyard in Rostock

**1994** → A & R Neptun Werft founded by Abeking & Rasmussen and Meyer Werft

**since 1994** → Maintenance and repair work on more than 1,200 boats and ships as well as on ships of the German Navy and German authorities

**1995 – 1996** → *First expansion phase:* Over € 23 million is invested to convert

the shipyard into one of the most modern in Europe, including construction of a ship lift with a capacity of up to 1,500 t.

**2003 – 2006** → *Second expansion phase:*

- Total investment of € 38 million
- Production hall area increased to 25,000 m<sup>2</sup> (total property area: 54,000 m<sup>2</sup>)
- One of the world's largest 5-axis CNC milling centers is installed

• Certification of the shipyard by all relevant licensing and environmental authorities

**October 2009** → The shipyard gets acquired by entrepreneur Heiner Tamsen:

- Shipyard starts to operate under the name TAMSEN MARITIM
- Increased focus on governmental clients and building special vessels
- Continuous growth of turnover and the team of craftsmen and engineers





# Repair Naval Vessels

The TAMSEN MARITIM team combines many years of experience, knowledge-based professionalism and the highest level of commitment when it comes to realizing our customers' orders. Our own high-performance targets, excellent know-how and state-of-the-art production facilities form the basis for meeting the highest requirements of customers such as the German Navy.

High quality, great flexibility and fast decision-making processes in the company ensure that even complex repair orders can be accepted and carried out reliably.

To date, more than 1.200 ships of various types and sizes have been serviced and repaired at our location. Including a wide range of naval vessels, ranging from patrol boats to training and minehunting vessels up to corvettes.

With our expertise and experience in the field of naval ship repair, the fundament has been created to consistently continue the success of TAMSEN MARITIM and to advance our development in other business areas such as the technologically highly sophisticated conversion and new construction of naval ships.



30 m Harbor Tugboat



54 m Minesweepers



57 m Fast Patrol Boat



Navy Vessel Upgrade



54 m German Mine Hunting Vessel



56 m Multi-Purpose Navy Vessel



90 m Corvette



# Repair Authority Vessels

- Structural work on hull and superstructure
- Maintenance on all ship operating systems
- Change of main engines and propulsion systems
- Upgrades of navigation and communication systems
- System modification and update to the latest technology standards
- Working with all materials from wood to non-magnetic steel, aluminum and even carbon sandwich
- Quality corresponds to the standards of the German Navy and classification societies
- Diagnostic analysis of onboard systems
- Professional sweeping and painting



28 m SAR Boat



43 m Survey Vessel



20 m Control Boat



28 m Fire-fighting Boat



46 m SAR and OPV Vessel



57 m Research Vessel



28 m Customs Cruiser



65 m OPV German Border Police



# Repair Commercial Ships

We repair (almost) everything that floats:

- water surveillance and oil recovery ships
- marine pollution control vessels
- crew transfer vessels (CTV)
- offshore supply vessels (OSV)
- small waterplane area twin hulls (SWATH)
- passenger vessels
- ferries
- firefighting ships
- seismic research vessels
- solar boats
- submarines
- fishery vessels
- yachts of all kinds
- restaurant boats
- pleasure crafts
- residential ships
- work boats
- survey vessels
- multi-purpose vessels
- funeral ships
- cogs
- drones
- barges (hopper)
- tugs
- historic vessels
- cable layers
- sailboats



27 m Harbor Tugboat



24 m Fast Crew Transfer Vessel



28 m Oceangoing Tugboat



35 m Luxury Sailing Yacht



60 m Hopper Barge



24 m Offshore Catamaran



27 m Traditional Passenger Ship



Propulsion System Refit



23 m Seagoing Passenger Vessel



# Modernizations & Conversions

For many years now, TAMSEN MARITIM has been a leader in modernizing ships from the existing fleet and modifying them according to customer specifications. Among other things, new engines, extensions and complete conversions are implemented.

Examples of our many years of experience and our expertise in using ships for a new purpose through modernization and conversion are former SAR sea rescue vessels that have been converted into offshore patrol ships or fire-fighting boats.

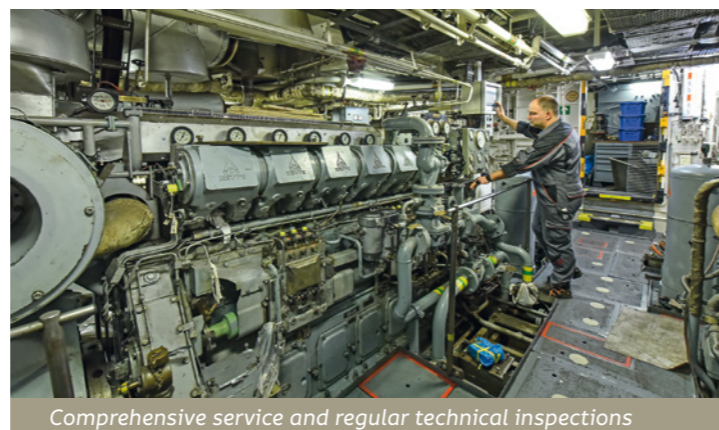
Our project teams also bring navigation systems and propulsion arrangements up to date in a highly professional manner. The range of services includes a comprehensive supply and life-cycle support, training of ship crews and regular technical inspections as well as spare part service.



32 m Buoy Layer and Ice Breaker



44 m Offshore Patrol Vessel



Comprehensive service and regular technical inspections



54 m Training Vessel



OPV and SAR Vessel Modification



32 m Historical Vessel



Training Facility



# Newbuild

The construction of new ships is one of TAMSEN MARITIM's rapidly developing business areas. Our own construction department works according to the latest technical standards and is able to process even very special projects. While in the past the focus was primarily on yachts with a length of 24 to 41 meters, the range of projects now extends to ships of all types and with a length of 10 to 70 meters. Our design engineers convince with independent innovative solutions and the aspiration of the best possible engineering into the products on behalf of our customers.

TAMSEN MARITIM is currently offering a line of new construction projects. Our company can proudly assure our customers that it builds new ships in accordance with our maxim for engineering efficiency and quality „Made in Germany“ and that it supplies high-tech products of long-term value.

We invite you to have a closer look into our newbuild department of SAR, special and patrol vessels.



17 m Fast Patrol Boat (contract signed)



23 m Patrol Boat 3D-Design / In-house Design Department



20 m Navy Vessel Steelwork (under construction)



Aluminum welding and construction



20 m Special Navy Vessel (2 vessels; contract signed)



23 m Fast Lightweight Hull (under construction)



Today TAMSEN MARITIM has established itself as the high-quality builder for workboats of highest demands. We are proud to serve for the German Maritime Search and Rescue Service with a series of 12 special emergency SAR boats so far. The German customs has ordered two 23 m patrol boats for operation in shallow waters.

These vessels have a high noise and vibration standard, a really efficient boat shape and the latest technology of an exhaust treatment system.

For the "parent" German Navy we have been contracted to build two safety vessels. These are about 20 m long steel boats operating as assistant vessels during the exercises of the German Navy frigates in the Baltic Sea.

The patrol boat family of TAMSEN MARITIM has with its new 17 m fast patrol boat another high-performance member dedicated for policing and fishery protection, customs and also SAR duties. These programs will be continued soon.



23 m Patrol Boat for Coast Guard and Customs Duties



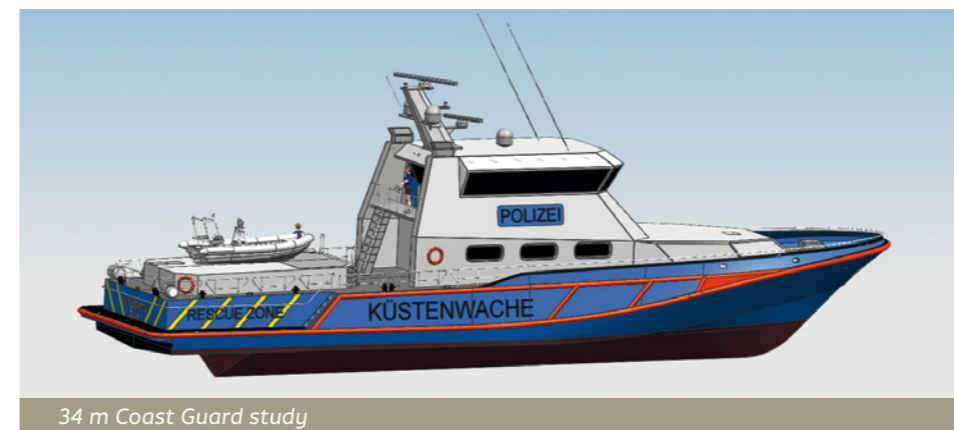
17 m Ultra Fast Interceptor



25 m Fast Motor Yacht



10 m SAR Boat at the Baltic Sea



34 m Coast Guard study



11 m SAR Aluminum production



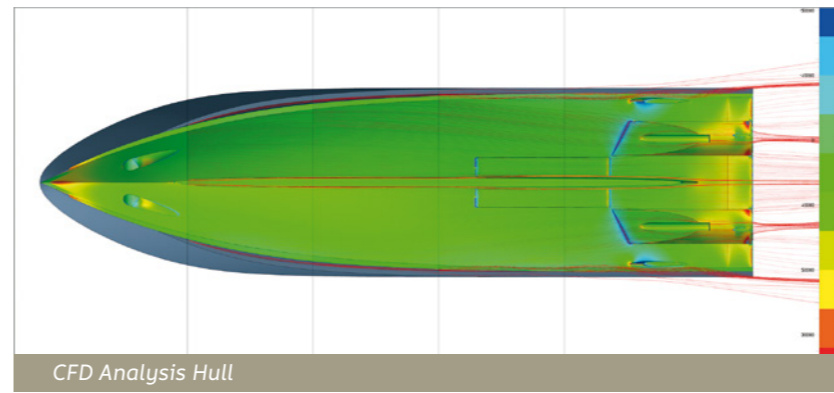
Engine installation



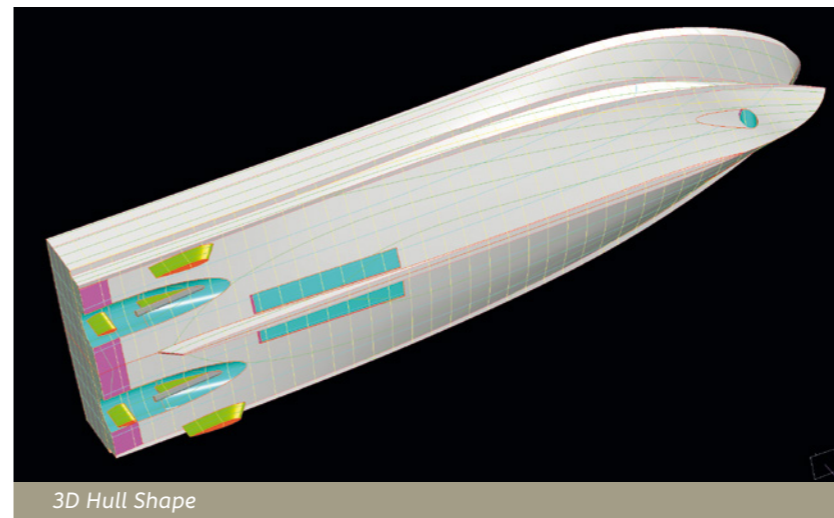
Craftsmen during training



R & D Team Meeting



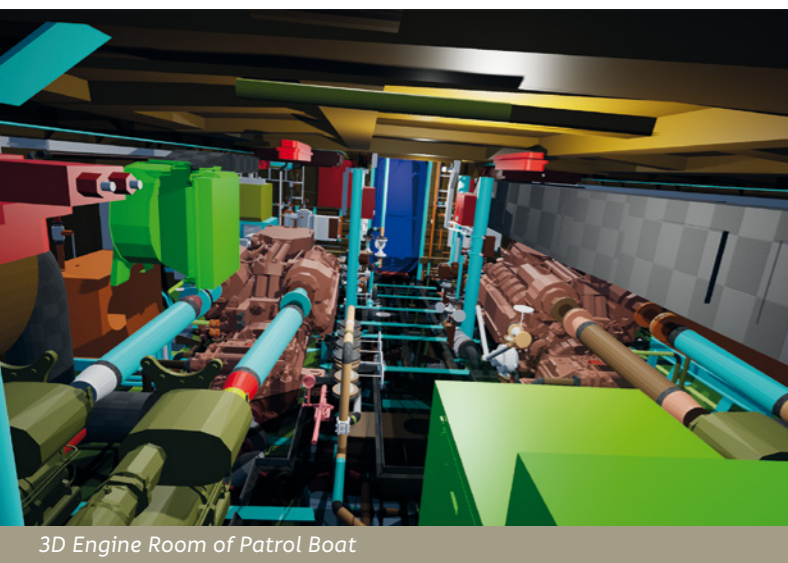
CFD Analysis Hull



3D Hull Shape



34 m Patrol Boat Design



3D Engine Room of Patrol Boat



3D Bridge Design



High Performance Propulsion Systems

# Design, Research & Development

With our own design department, the engineers are creating our family of vessels from the first sketch to the tested and ready-to-use boat including integrated logistics support (ILS).

The research and development team is dedicated to analyze new technologies and trends and support the team of inhouse designers with their scientific research results.

Proven concepts are discussed in an open way to find room for improvements like carbon free energy solutions for the propulsion systems.

The team is also focusing on low resistance, lightweight, slender hull shapes with foil support for future generations of human transport vessels using the latest technologies.

As a leading member of a research association for the development of emission-free electric mobility, we develop innovative solutions for future transport in urban sea areas.



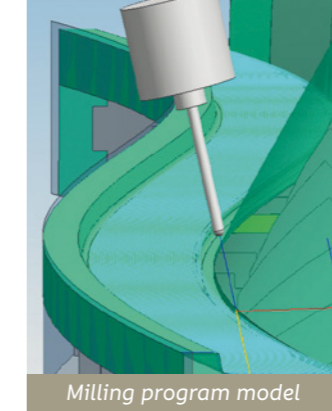
# Composite Systems

AMSEN MARITIM's broad portfolio of productions includes the treatment and processing of composite materials. In order to be able to implement even the most demanding projects in terms of design and dimensions, Europe's largest 5-axis CNC milling center is available in our company. In addition to maritime products such as ship hulls, in particular components for the wind industry are created by us, including master models, molds and composite parts with a length of up to 85 meters.

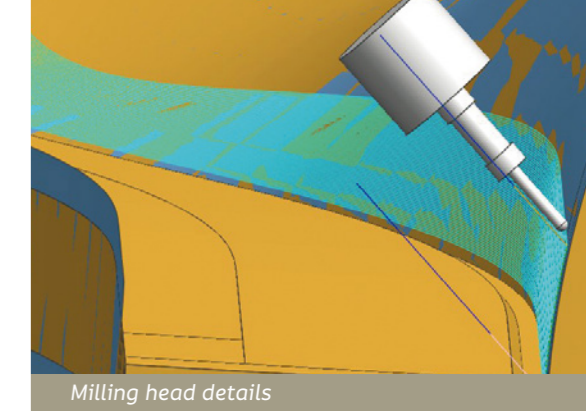
The 5-axis CNC milling center and other modern processing facilities ensure high product quality, great precision, short delivery times, and compliance with applicable standards. Together with our customers, our engineers develop specific production methods and quality parameters. They bring many years of experience, the latest knowledge and innovative materials to the table and thus ensure the successful completion of every project to the satisfaction of our customers.



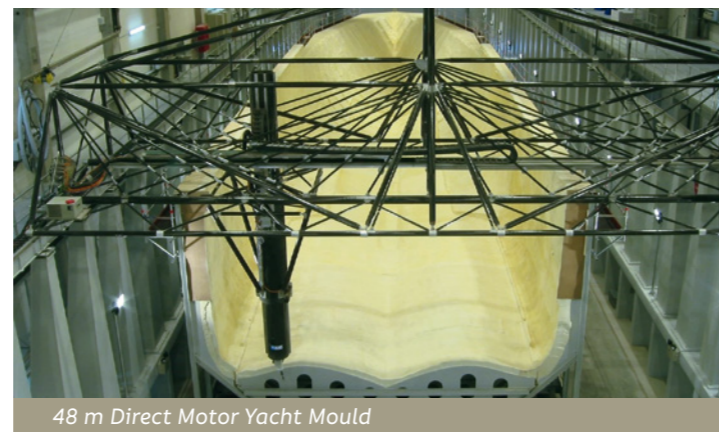
5-Axis CNC Milling Machine



Milling program model



Milling head details



48 m Direct Motor Yacht Mould



70 m x 13 m x 7 m Working Area



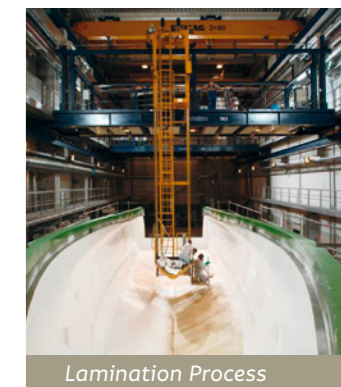
Product transport



Plug and Mould of a 60 m + Rotor Blade



25 m Hull Demoulding



Lamination Process



Special tasks and special people



# The Shipyard

**DEPARTMENTS:** Refit & Repair, Modifications, Conversions, Newbuild, Composite, CNC milling / plug manufacturing, Training & Offshore Service

**ANNUAL TURNOVER**  
2009 – 2022: increase by 500 %

**PERSONNEL:** 140 employees, 30 engineers

**SPECIALS FEATURES:** in-house design department, research & development department, service department



WORKSHOPS:	L	B	H	CRANE CAPACITY	HEATING SYSTEM
	M	M	M		
0	81 (89)	23	16	4 x 6.3 t	yes
1	74 (87)	24	25	2 x 16 t	yes
2	53 (68)	14	15	2 x 10 t	yes
4.1	60 (67)	15.5	16.5	8 x 16 t	yes
4.2	60 (67)	15.5	16.5	8 x 16 t	yes
4.3	28 (35)	17	16.5	4 x 6.3 t	yes
4.4	32	20	12	1 x 2 t	yes
5.0	70	20	18	4 x 25 t	yes
Outdoor I	100	20		1 x 20 t	
Outdoor II	70	30			



*The world of TAMSEN MARITIM's customer countries ...  
... to be continued*

---

Australia • Turkey • Sweden • Morocco • United Kingdom • United Arab Emirates • Spain •  
Denmark • Japan • China • Germany • USA • France • Singapore • South Africa • Austria •  
Switzerland • Italy



**TAMSEN MARITIM GmbH**

Maritimstraße 1 | 18147 Rostock, Germany

Phone: +49 (0) 381 65 81 0 | Fax: +49 (0) 381 65 81 104

info@tamsen-maritim.de

*For more information please visit our websites:*

**[www.tamsen-maritim.de](http://www.tamsen-maritim.de)**

**[www.tamsen.com](http://www.tamsen.com)**

